

826-2100

Heater Tape Installation for FPP45 120V Fryer

Follow these instructions to add heater tape to the FPP45:

1. Remove power from the unit and pull it from the hood.
2. Remove the small panel on the back of the fryer and access the transformer box. **See Figure 1.**
3. Remove the transformer box.
4. Attach the provided wires in the following manner: Wire 1C is routed from T1 to Pin 2. Wire 2C is routed from T2 to Pin 8. **See Figure 2** and the wiring diagram, **Figure 6.**
5. Reinstall the transformer box and replace the back panel.
6. Remove the filter pan.
7. On the right side of the cabinet interior, locate the return plumbing. **See Figure 3**, which shows the heater tape installed on the plumbing.
8. Lay the blunt end of the tape on top of the pipe at the forward junction and secure with the insulating aluminum tape.
9. Lay the remaining heater tape on top of the pipe with the loose wires facing the rear of the fryer. Tape the heater tape down securely. Pull the loose ends out of the fryer back.
10. On the left side, access to the suction manifold plumbing is limited. The pipe runs above a narrow slot in a frame channel. **See Figure 4.**
11. Secure the blunt end of the heater tape to the most forward junction with a wire tie. Secure the tape at the rear most junction with a wire tie. Pull the loose ends out of the fryer back. **See Figure 5.**

In Kit 826-2100		
Part No.	Description	Qty
806-5933	Heater tape	2
106-5011	Harness extension	1
811-0746	Aluminum tape	.16
805-0902	Wiring diagram	1
819-6093	Instructions	1
W1C160	Wire	1
W2C151	Wire	1

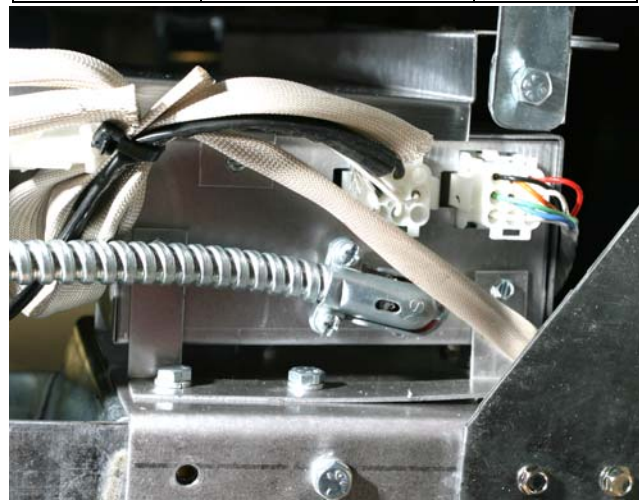


Figure 1: The transformer box is behind a panel on right side of the fryer back.

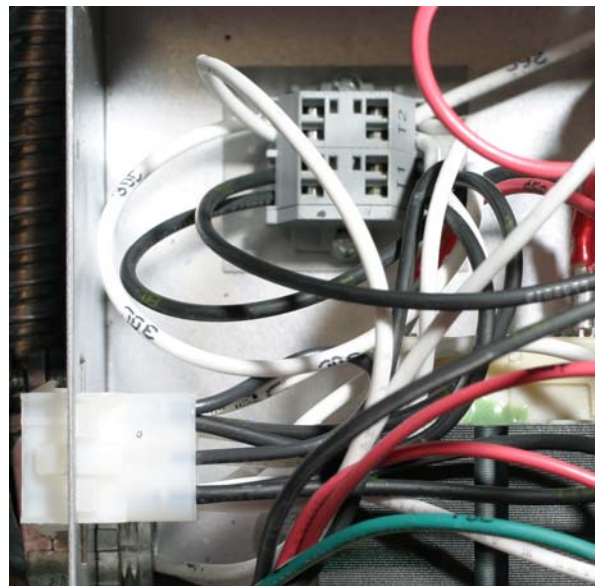


Figure 2: Wires are routed from the terminal block (shown above) to pins 2 and 8 of the plug.

826-2100

Heater Tape Installation for FPP45 120V Fryer

12. Shape short (3-inch) strips of tape into inverted U's and drape them over the pipe and the heater tape, securing the heater tape.
13. Work a long piece of tape over the heater tape where the manifold is attached to a supporting bracket.
14. Wire the suction heater tape into the power plug at the rear of the fryer at pins 6 and 4. Wire the return line heater tape into pins 2 and 8. See the wiring diagram, **Figure 6**.



Figure 3: The return manifold is easily accessible on the right side of the fryer.

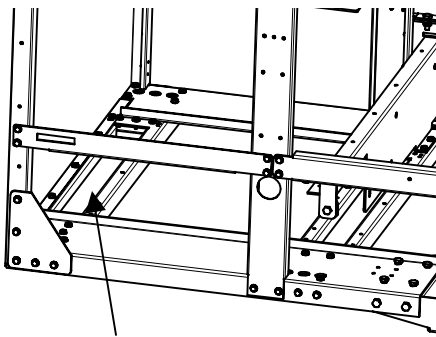
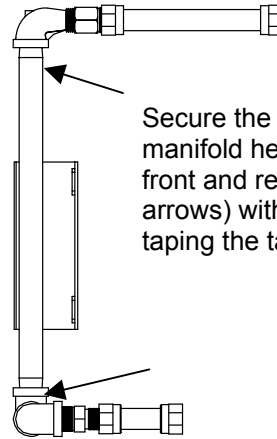


Figure 4: The suction manifold is accessible through this narrow gap in the frame channel.



Secure the left side suction manifold heater tape at the front and rear junctions (see arrows) with a wire tie before taping the tape in place.

Figure 5

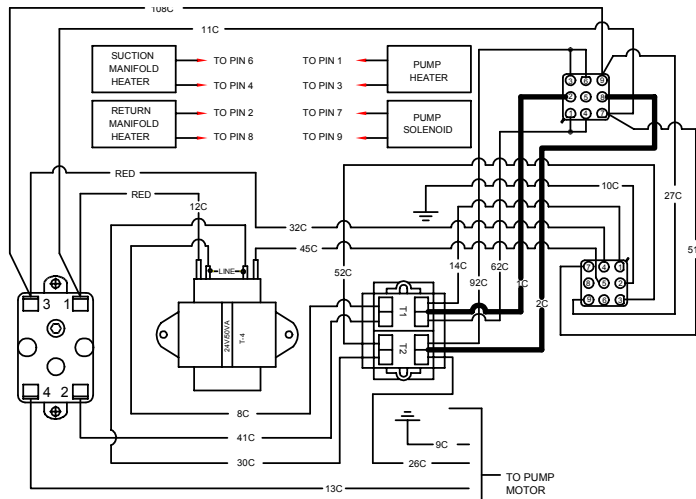


Figure 6: The wires added for the kit are shown with heavier lines.